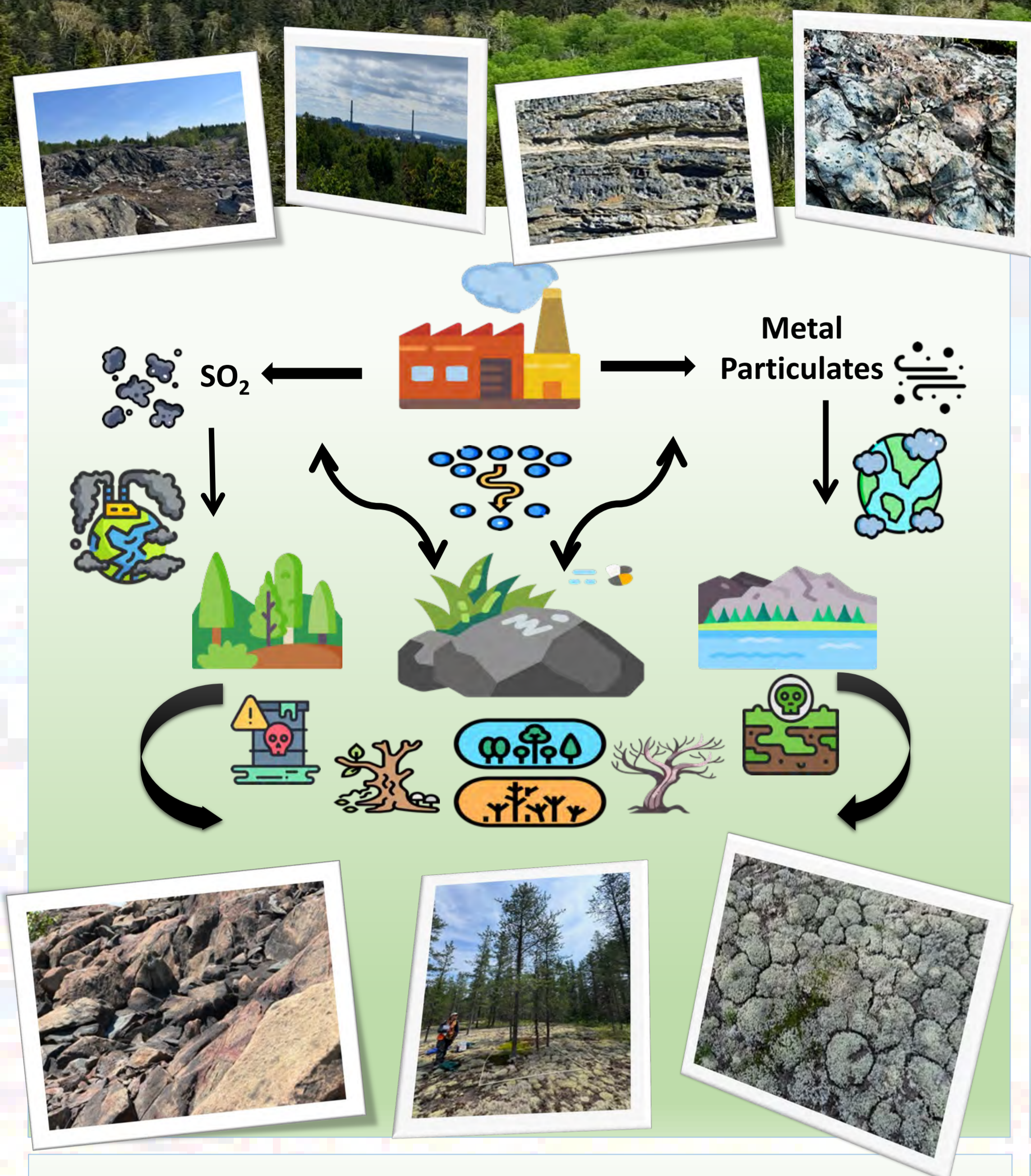


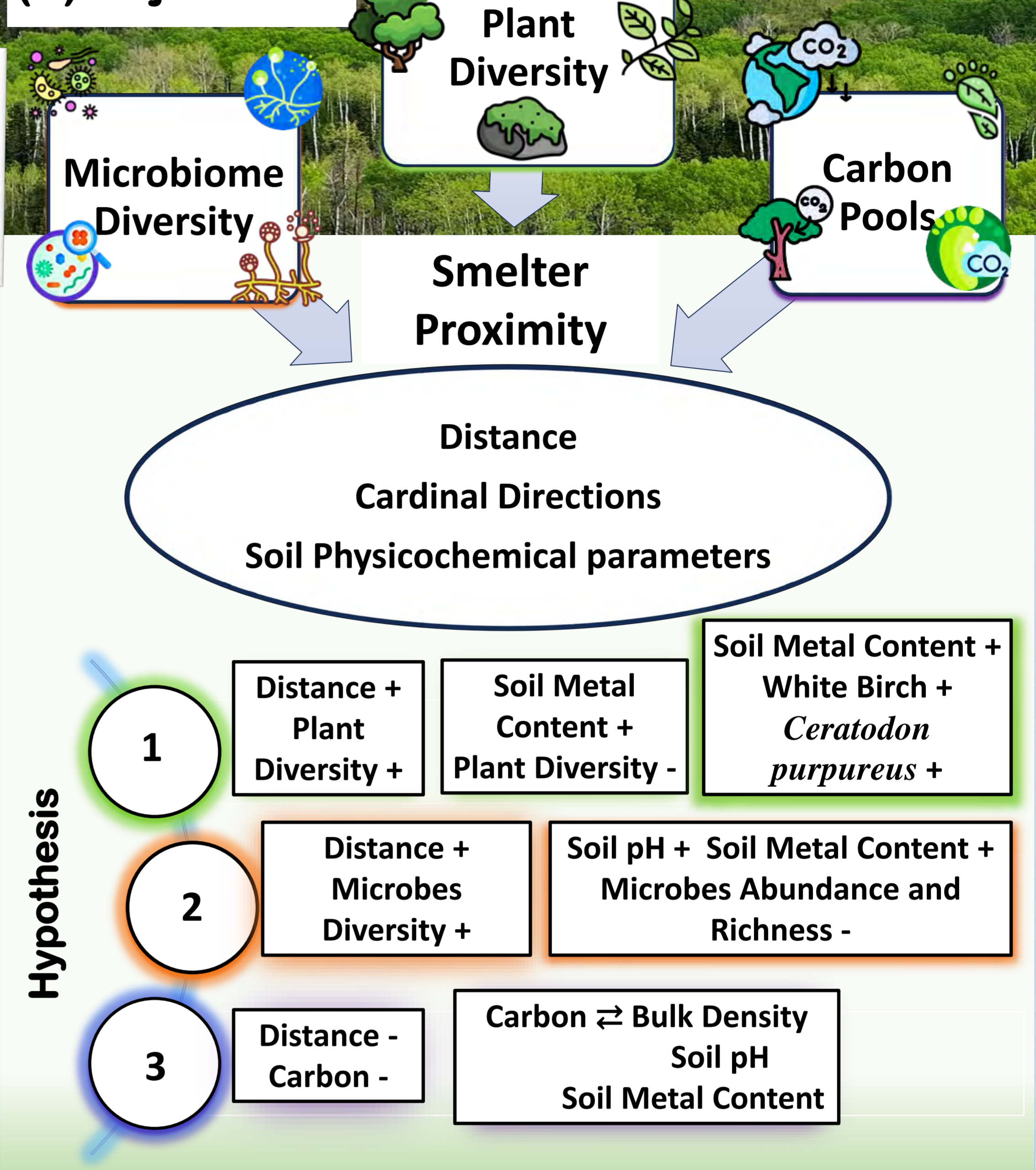
# Evaluation of Vegetation, Soil Microbiome Diversity and Carbon Pools of Rocky Outcrops in Proximity to the Horne Smelter of Rouyn-Noranda

Angana Kuri, Mebarek Lamara, Xavier Cavard and Nicole Fenton.  
 Institut de recherche sur les forêts, Université du Québec en Abitibi-Témiscamingue, Quebec, Canada.

## (A) Context

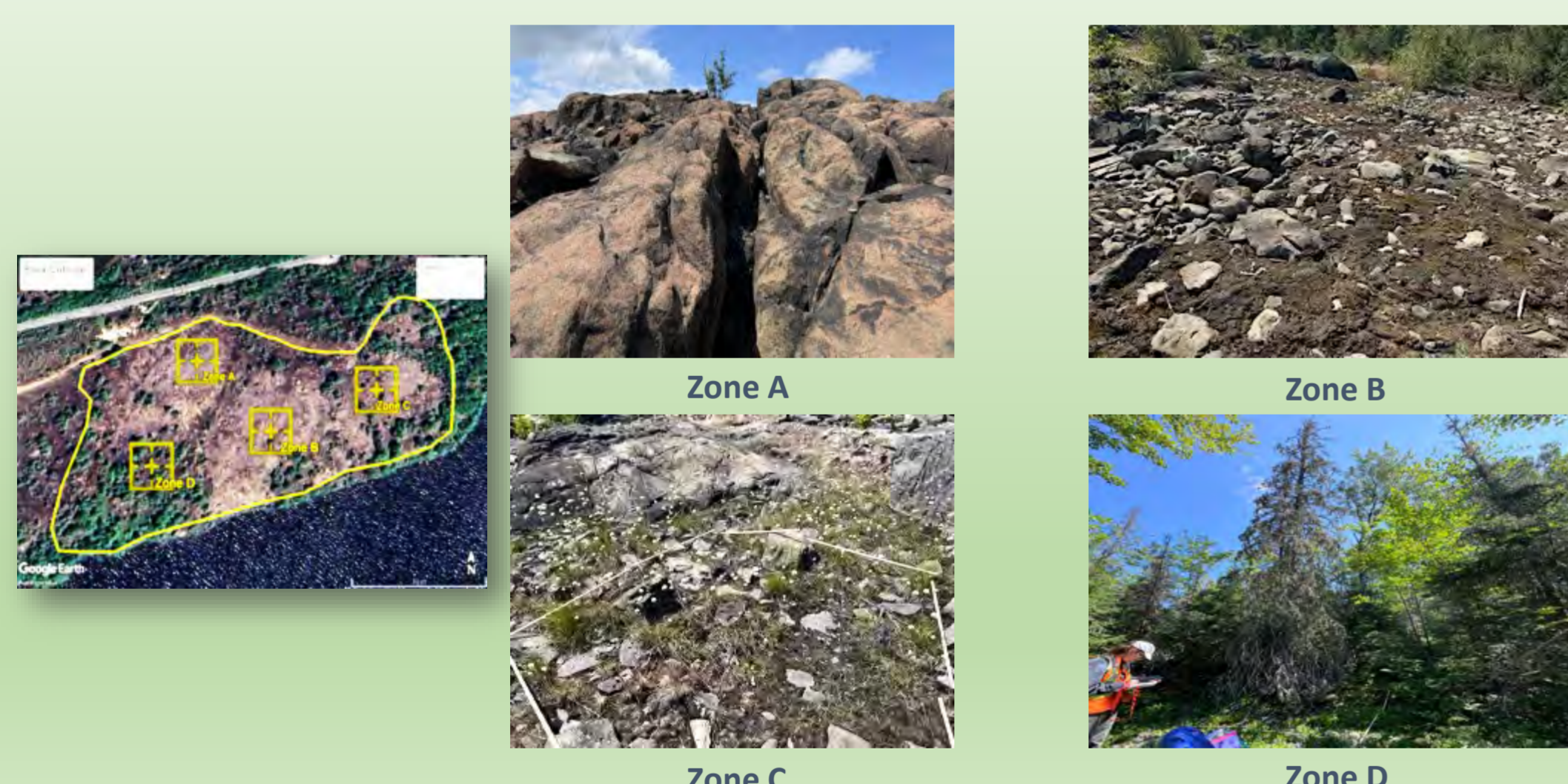


## (B) Objectives



## (C) Study Area

45 Rock outcrops with 268 plots were sampled.



## (D) Methods



## (E) Possible Outcome

Species composition prediction within proximity  
 Extent of metal deposition  
 Determination of resilient species for future restoration

## Mixed models Ordination Techniques

### Species Diversity vs Soil Properties

