

# Stand history is more important than climate in controlling red maple (*Acer rubrum* L.) growth at its northern distribution limit in western Quebec, Canada

Yun Zhang<sup>1,4</sup>, Yves Bergeron<sup>1</sup>, Xiu-Hai Zhao<sup>2</sup> and Igor Drobyshév<sup>1,3,\*</sup>

<sup>1</sup> Institut de recherche sur les forêts, Université du Québec en Abitibi-Témiscamingue (UQAT), 445 boul. de l'Université, Rouyn-Noranda, Québec J9X 5E4, Canada

<sup>2</sup> Key Laboratory for Forest Resources & Ecosystem Processes of Beijing, Beijing Forestry University, Beijing 100083, P. R. China

<sup>3</sup> Swedish University of Agricultural Sciences, Southern Swedish Forest Research Centre, PO Box 49, Alnarp SE-230 53, Sweden

<sup>4</sup> Present address: National Plateau Wetlands Research Center, Southwest Forestry University, Kunming 650224, P. R. China.

\*Correspondence address. Institut de recherche sur les forêts, Université du Québec en Abitibi-Témiscamingue (UQAT), 445 boul. de l'Université, Rouyn-Noranda, Québec J9X 5E4, Canada. Tel: +1-819-762-0971 Ext. 2057; E-mail: igor.drobyshév@uqat.ca, igor.drobyshév@slu.se

## Abstract

### Aims

We examined growth of red maple (*Acer rubrum* L.) to evaluate environmental controls of its northern distributional limit in Eastern North America and its potential response to future climate change.

### Methods

We collected growth data from nine sites located along a 300-km transect (47–49°N), which included frontier population of red maple and covered three bioclimatic domains in western Quebec. We analyzed three growth variables: growth rates during the first 30 years of maple lifespan, cumulative basal area increment (BAI) over the most recent decade (2000–09) and annual growth rate over the whole tree lifespan ranging from 58 to 112 years. We also examined growth sensitivity to climate by using response function analysis.

### Important Findings

Three different proxies of maple absolute growth (initial growth rate, BAI during 2000–09 and mean diameter growth rate) indicated a better growth with an increase in latitude. We speculate that stand history effectively overrode the direct effects of colder climate on maple growth along the S–N gradient. Regeneration of maple in the southern sites likely occurred in canopy gaps, whereas in the north

it was contingent upon large disturbances such as stand-replacing fires, which apparently provided more favorable light environment for maple growth than canopy gaps. The annual growth variability, which reflects effects of annual weather on growth and is largely independent from the absolute growth rate, was significantly affected by monthly climate, suggesting a positive effect of higher summer temperature in the northern part of the transect (48–49°N) and a negative effect of summer drought in the south (47–48°N). In the future, the natural and human disturbance regimes will be dominant controls of the actual biomass productivity of red maple at the northern limit of its present distribution range. Direct effects of climate on maple growth would likely be less important in this context, and will likely entail negative effect of increased summer drought in the southern part of the study area and positive effects of increased temperatures in the north.

**Keywords:** biomass productivity, climate change, dendrochronology, ecotone, hardwoods, species migration

Received: 18 August 2014, Revised: 3 October 2014, Accepted: 16 October 2014

## INTRODUCTION

Climate influences forest communities by affecting species phenology, growth and the outcomes of competitive

interactions among plants (Hansen *et al.* 2001; Richardson *et al.* 2006; Tylianakis *et al.* 2008). Over the 20th century, annual mean temperature and annual total precipitation in eastern Canada have increased by 0.5–1.5°C and 5–35%,

respectively (Zhang *et al.* 2000). Temperature is expected to increase by an additional 1.5–4.5°C by 2050, accompanied by 10–25% increases in the amount of precipitation (Boer *et al.* 2000; Plummer *et al.* 2006). Such changes in climate may have major impacts on tree growth and distribution by affecting plant physiology (Way and Oren 2010), tree sensitivity to environmental variability (Allen *et al.* 2010) and natural disturbance regimes (Bergeron *et al.* 2010). Growth responses to these changes would likely be species-specific (Ashraf *et al.* 2013).

The performance of species at their distributional limits may give clues to understand their responses to long-term climate variability (Drobyshev *et al.* 2014; Griesbauer and Green 2010; Lv and Zhang 2012; Wilmking *et al.* 2004; Zhang and Hebda 2004). Temperature is a crucial factor for tree growth at northern latitudinal and upper altitudinal limits (Frank and Esper 2005; Fritts 1976; Mäkinen *et al.* 2002). Climate warming has induced a northward or an upward shift of many species at their distributional limits in different temperate biomes (Griesbauer and Green 2010; Kullman 1993; Pederson *et al.* 2004; Suarez *et al.* 1999; Wilmking *et al.* 2004). In eastern North America, temperate hardwood species are expected to migrate further north under warmer climate conditions (Bertheaux *et al.* 2010; Goldblum and Rigg 2005; McKenney *et al.* 2007; Terrier *et al.* 2013).

Competition may be another factor that influences species distributional limits (Ettinger and HilleRisLambers 2013; Gavin and Hu 2006). Competition may restrict species ranges by excluding species from potentially suitable habitats (Armas *et al.* 2009), and may also enhance negative effects of sub-optimal climate conditions on tree growth (Scheller and Mladenoff 2008). Therefore, a consideration of competitive interactions between species, together with a detailed analysis of climate–growth relationships, would increase realism in modeling potential shifts in species distributions (Davis *et al.* 1998; Guo *et al.* 2013).

Studies of the long-term forest dynamics have demonstrated that distribution ranges of hardwood species are closely linked to regional climate (Davis 1981; MacDonald 1993). For example, fossil pollen data have indicated that red maple (*Acer rubrum* L.) experienced a northward expansion in North America during the warmer period of the early to middle Holocene (from 11 000 to 7 000 years before present, Delcourt and Delcourt 1987). Dendrochronological methods have a potential to provide high resolution data to help disentangle climate–growth relationships; however, there were few dendroclimatological studies on hardwood species at their northern distributional limits in eastern Canada (Tardif and Bergeron 1993; Tardif *et al.* 2006), most of such studies being focused on coniferous species (Drobyshev *et al.* 2010, 2013; Genries *et al.* 2012; Nishimura and Laroque 2011).

Red maple is one of the most widespread broadleaf trees in eastern North America, which also marks the border between boreal and temperate biomes in eastern Canada (Walters and Yawney 1990). In western Quebec, red maple reaches

its northern distributional limit around 48°N, where its frontier populations occupy south-facing hill slopes (James and Courtin 1985; Tremblay *et al.* 2002) and coexist with other deciduous and coniferous species, forming mixedwoods. Spring frost is an important factor affecting red maple sexual regeneration in this region, with waves of maple recruitment being associated with periods of low spring frost frequency (Tremblay *et al.* 2002). However, climate effects on the growth of adult trees, which may be another factor controlling the northern distribution limit of red maple, are poorly understood. Furthermore, presence of abundant regeneration of red maple on recently disturbed sites in this region suggests importance of stand history affecting its recruitment and canopy abundance.

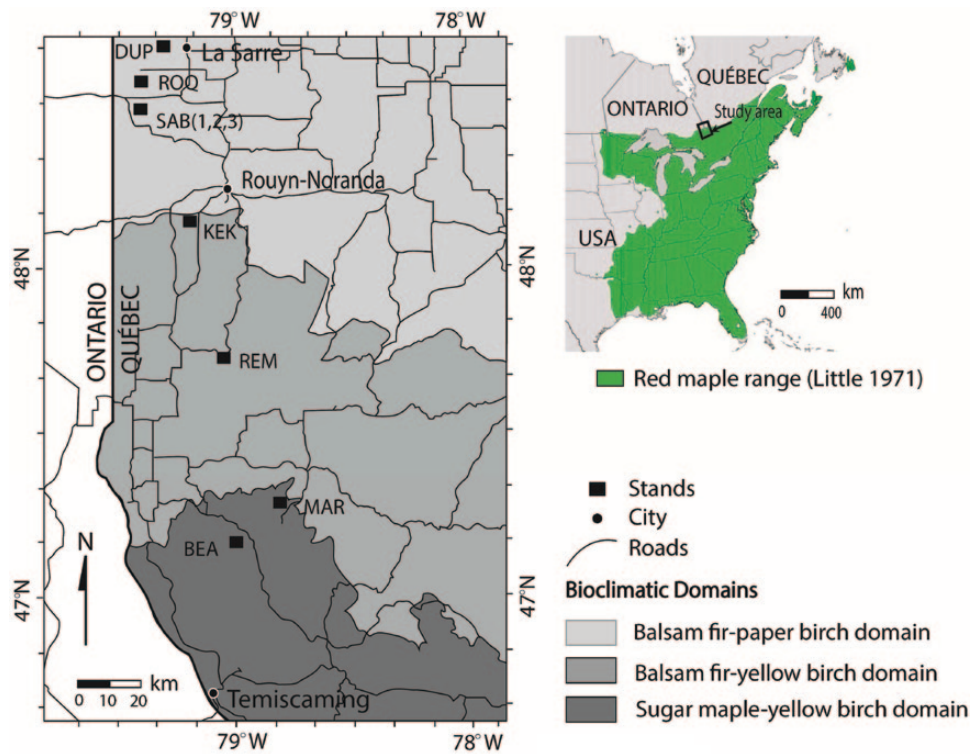
In this study, we examined biomass accumulation rates and growth sensitivity of red maple to annual weather along a 300-km long latitudinal gradient (47–49°N) stretching from the southern mixed forest to the frontier maple populations in eastern Canada. We put forward two hypotheses: (i) biomass accumulation rate declines with increasing latitude and (ii) annual growth sensitivity to temperature increases with latitude while sensitivity to precipitation decreases with latitude. Both hypotheses assumed that growth was increasingly limited by temperature toward the north, reflecting a trend toward colder conditions and a shorter growing season. We also discussed the growth of red maple under projected climate change and resulting dynamics of its northern limit in eastern North America.

## MATERIALS AND METHODS

### Study area

Our study was conducted at the Quebec-Ontario border along a latitudinal gradient (47–49°N) extending to the northern limit of red maple distribution (Fig. 1). The study area covered the Abitibi-Témiscamingue region of Quebec, which is dominated by glacial deposits (Bouchard *et al.* 2005; Vincent and Hardy 1977). Regional topography is generally flat, with small hills reaching elevations of 200–400 m a.s.l. Stands with red maple in the canopy are usually found on till deposits or rocky outcrops (Lalonde 1991), with such habitats being more common toward the southern portion of our transect (Ministère des Ressources naturelles du Québec (MRNQ) 1998).

Winter climate of the study area is dominated by dry polar air masses, while warm summers bring moist tropical air masses to the region. Average temperature decreases from the southern end of the study transect to its northern end, while the pattern of precipitation is reversed (Table 1). Annual mean temperature is ~1.7°C at BEA (the southernmost site) and 0.8°C at DUP (the northernmost site). January is the coldest month, with the average mean temperature ranging between –16.9°C (BEA) and –18°C (DUP). July is the warmest month, with the average mean temperature varying from 17.3°C (BEA) to 16.6°C (DUP). Total annual precipitation is between 705 mm (BEA) and 746 mm (DUP). Annual



**Figure 1:** site locations and distribution range of red maple.

mean temperature, collected by on-site temperature sensors (Table 1), varied from 2.43 to 5.01°C.

Nine red maple sites were selected across the three bioclimatic domains (Saucier *et al.* 2003), including two sites within the sugar maple (*Acer saccharum* Marsh.)—yellow birch (*Betula alleghaniensis* Britt.) domain in the south (sites BEA and MAR), two sites within the balsam fir (*Abies balsamea* (L.) Mill.)—yellow birch domain in the center of the study area (sites REM and KEK) and five within balsam fir-paper birch (*Betula papyrifera* Marsh.) domain in the north (sites SAB1, SAB2, SAB3, ROQ and DUP, Fig. 1). An ecological survey at the landscape scale across the three bioclimatic domains has determined that the frequency of red maple decreased from 46 to 11%, moving northward along our latitudinal gradient (Ministère des Ressources naturelles du Québec (MRNQ) 1998).

### Soil sampling and analyses

To characterize soil properties, we collected two samples from the soil mineral layer (20–30 cm) at each site, which were combined to form one bulk sample. A portion of the combined sample was air-dried at 20°C for 1 week and sieved to pass a 2-mm mesh screen. Soil texture was quantified by the Bouyoucos Hydrometer Method (Sheldrick and Wang 1993, online Supplementary Table S1). A second portion of sample was sieved through a 4-mm screen and oven-dried at 40°C for 60 h. We used this portion to determine soil chemical composition (online Supplementary Table S2), including total carbon

(C, %), nitrogen (N, %), sulphur (S, %) and phosphorus, together with pH in 0.5 M CaCl<sub>2</sub> and cation exchange capacity (CEC). The analytical procedures followed established protocols (Laganière *et al.* 2010) at the Laurentian Forestry Centre of the Canadian Forest Service, Quebec City, Quebec, Canada.

### Climate data

Climate data were generated in BioSIM 10.2.2.3, which is a set of spatially explicit bioclimatic models (Régnière 1996). We used BioSim to interpolate climate data that had been obtained from the five weather stations closest to each site, taking into consideration of site latitude, longitude and elevation. We used data for the period 1964 through 2009, which was the common period across sites and had the highest quality of climate data. Analyzed climate variables included monthly mean temperature and monthly total precipitation from July of the previous year to August of the current year. In addition, we used the monthly drought code (MDC), which was calculated from May to September, to detect the effects of soil moisture on tree growth. MDC is the product of monthly maximum temperature and total precipitation (Girardin and Wotton 2009) and is considered an indicator of moisture content in the soil deep organic layer (Turner 1972).

To directly assess temperature variation across our study area, we set a temperature sensor (iButton DS1921G; Maxim Electronics, Dallas, TX) in the center of each site, placing it on the northern side of a tree at 1-m height. The sensors collected

**Table 1:** stand history, site climatic conditions (1965–2009) and statistical characteristics of red maple residual chronologies from the study sites in western Quebec

Sites	DUP	ROQ	SAB1	SAB2	SAB3	KEK	REM	MAR	BEA
Stand history and site location									
Direct records of disturbances year	1950	1880s	1923	1923	1923	1941	-	-	-
Disturbance type	Clear cut	Fire	Fire	Fire	Fire	Fire	-	-	-
Stand age, maple age	58, 58	112, 112	85, 85	85, 84	85, 84	65, 64	161, 88	110, 83	145, 74
Competition index	0.74	0.39	1.11	0.82	0.98	1.38	0.69	0.7	0.65
Latitude, °N	48.88	48.55	48.46	48.46	48.46	48.18	47.68	47.36	47.12
Longitude, °W	79.36	79.41	79.42	79.42	79.42	79.15	79.04	79.28	79.48
Elevation, m	312	330	405	365	350	376	340	293	239
Climatic conditions									
Annual mean temperature, °C	0.8	1.5	1.5	1.5	1.5	1.6	1.5	1.5	1.7
Annual total precipitation, mm	895	907	899	898	898	898	897	887	846
Average summer temperature, °C	15.3	15.9	16.0	16.0	16.0	16.0	15.9	15.9	16.1
Sum of summer precipitation, mm	303	300	292	291	291	288	287	289	272
Average summer MDC	12.6	12.7	12.9	12.9	12.9	13.9	12.5	13.4	14.2
Spring minimum temperature	-2.01	-1.56	-1.53	-1.54	-1.51	-1.17	-1.10	-1.02	-0.98
Spring mean temperature	4.61	5.11	5.17	5.16	5.18	5.33	5.45	5.39	5.50
Spring maximum temperature	11.23	11.33	11.38	11.36	11.37	11.40	11.49	11.53	11.98
Annual mean temperature during 2011	2.43	2.70	2.77	2.74	2.75	3.01	3.48	4.24	5.01
Characteristics of chronologies									
Number of trees (number of radii)	14 (26)	12 (23)	13 (26)	12 (24)	12 (24)	17 (32)	12 (24)	12 (23)	15 (27)
Chronology length	1951–2009	1897–2009	1924–2009	1925–2009	1925–2009	1909–2009	1921–2009	1926–2009	1937–2011
Mean ring width, mm	1.08	1.43	1.07	1.16	1.12	1.05	0.50	0.98	0.86
Mean sensitivity	0.29	0.24	0.27	0.24	0.28	0.28	0.25	0.27	0.31
Period with EPS $\geq 0.85$	1957–2009	1944–2009	1929–2009	1936–2009	1951–2009	1952–2009	1965–2009	1957–2009	1953–2011
Common interval analysis for 1965–2009									
Express population signal (EPS)	0.91	0.85	0.90	0.88	0.87	0.90	0.86	0.89	0.91
Signal-to-noise ratio	10.57	5.53	9.05	6.6	6.50	8.71	5.99	8.47	10.65
Variance explained by the first PC, %	36.89	29.12	49.02	44.0	44.2	28.93	30.21	36.03	39.01

Dash indicates no data available. Competition index refers to estimates of competition conditions of sampled trees only. Annual mean temperature during 2011 refers to on-site measurements.



data with 3-h intervals for the period from 1 January 2011 to 31 December 2011.

### Field sampling and initial data treatment

We selected study sites based on the field surveys of Lalonde (1991) and Tremblay et al. (2002). Stand selection was guided by the following criteria: (i) red maple should be present as large (above 10 cm in diameter at breast height) canopy or subcanopy trees and 2) red maple should contribute >20% in relative species abundance of selected stand. Identifications of stand origin and stand age were based on historical records of forest fires (Lalonde 1991), forest fire database from the Quebec Ministry of Natural Resources and Wildlife and stand age data available from previous studies (Graignic et al. 2014; Lalonde 1991). We assumed that if stand age exceeded the one of the oldest sampled maples, maple recruitment occurred through canopy gaps and not through stand-initiating disturbance.

At each site, we randomly selected 12–17 largest maples, measured their diameter at breast height (DBH, 1.3 m) and extracted two cores from each tree at 20 cm above the ground surface. The cores were dried, mounted and sanded until ring boundaries were clearly visible. Cores were visually cross-dated by using the point year technique (Stokes and Smiley 1968). After cross-dating, ring widths were measured on scanned images in CDendro and CoRecorder software, ver. 7.3 (Larsson 2010). Data quality was statistically verified using the program COFECHA (Holmes 1983).

Prior to the dendroclimatic analyses, we removed age- and size-related trends in tree ring-width series. The series were detrended with a cubic spline using program ARSTAN (Cook and Peters 1981). The detrending procedure assumed a 50% frequency response over a 40-year frequency band. We then performed autoregressive modeling on detrended ring-width series to remove temporal autocorrelations and to enhance the common signal. The individual residual series were subsequently averaged together using a biweight robust mean to develop a mean standardized chronology for a site that retained high-frequency variation and which contained no low-frequency trend.

### Dendrochronological analyses

#### Initial growth rates

We developed cambial age chronologies of the first 30 years of tree lifespan to evaluate the initial growth rates and regeneration conditions and compared these rates across domains. To develop cambial age chronologies we calculated mean ring width (in mm) for each year of growth from year one to year 30, aggregating samples collected within each bioclimatic domain. Since basal area increment (BAI) better represents tree biomass accumulation than does the diameter increment (Pedersen 1998), we converted the data into BAI. To evaluate differences in absolute growth rates among the bioclimatic domains, we fitted BAI cambial chronology by linear regression and tested the differences among  $b$  coefficients

(regression slopes) using a General Linear Model in SPSS 15.0 (Carpenter et al. 2004).

#### Environmental effects on growth of adult trees

To understand environmental controls of growth for adult trees, we regressed the growth rate against latitude (representing temperature gradient, Table 1), soil pH (representing soil conditions, online Supplementary Table S2) and an index of competition interactions (Table 1), by using multiple linear regression function *lm* and bootstrapping function *boot* of the statistical programming language R ver. 3.0.2 (Fox 2002). There was no multicollinearity among the three environmental variables and residuals were normally distributed. To minimize effects of site history, i.e. canopy disturbances and changes in competition levels, on growth dynamics we limited consideration to the most recent 10 years (2000–09). Similar to the analyses of initial growth, tree ring data were converted into BAIs. To eliminate age effects on biomass accumulation, we divided BAI of each tree by tree age, and then made an average of adjusted BAI from all trees as site mean BAI.

To calculate competition interactions, we measured DBH of both cored and neighboring trees, and recorded the distances between them. Specifically, we selected the nearest neighbor within each of the four quadrants that were located around the focal maple tree, and which were delimited by the four cardinal directions (i.e. North, South, East and West). We then used Hegyi's (1974) single tree competition index (CI) to quantify the influence of neighboring trees on the focal trees:

$$CI = \sum_{j=1}^N \left( \frac{D_j}{D_i} \times \frac{1}{DIST_{ij}} \right)$$

where, CI is the competitive load for the focal tree;  $D_i$  is for the focal tree's DBH (cm);  $D_j$  is for the competitor tree's DBH (cm);  $DIST_{ij}$  is the distance (m) between focal tree  $i$  and competitor tree  $j$  and  $N$  is the number of competitor trees surrounding the focal tree (four in our study). According to this formula, higher CI would result from the smaller the size of the focal tree, the larger the size of the competitor and the lower the local density (i.e. the greater the distance between trees). We averaged CI of all of the maple trees from the same site to estimate site CI (Table 1).

#### Annual growth rate

To further evaluate variability in growth rates along the transect, we calculated mean diameter growth rate of red maple as a ratio between DBH and tree age for each site.

#### Growth sensitivity to annual climate variability

We used response function correlations to examine growth sensitivity to climate resolved at monthly scale. A response function is a principal component (PC) regression that is used to solve the problem of multicollinearity among climatic predictors (Briffa and Cook 1990; Morzikh and Ruark 1991). Correlation coefficients of the response functions were

calculated over the common interval 1965–2009, using the program DENDROCLIM2002 (Biondi and Waikul 2004).

## RESULTS

### Stand history and soil conditions

The majority of northern sites (ROQ, SAB1, SAB2, SAB3 and KEK) were post-fire stands according to the documentary records of fire events (Lalonde 1991) and data on maximum tree age of red maple in these sites (Table 1). At site DUP the initiation year of the stand and of the sampled maples coincided (Table 1), and absence of recent charcoal suggested a clear-cut event. In southern sites (REM, MAR and BEA), the maximum age of trees in the forest canopy was higher than that of sampled maples, suggesting that these maples probably regenerated in gaps or under canopy (Table 1).

Soils of all sites showed a high sand content (>73%, online Supplementary Table S1) and rather acid soil conditions with pH ranging from 3.04 to 4.20 (online Supplementary Table S2). There was no clear pattern in variation of soil nutrients (i.e. total C, N and S) along the latitudinal gradient. Both the northernmost (DUP) and the southernmost (BEA) sites revealed lower nutrient concentrations as compared to more centrally located sites. CEC was similar among all the sites (ranging from 17.63 to 23.79), except for the site SAB1 (5.86).

### Chronology characteristics

The length of maple residual chronologies ranged from 58 to 112 years, with the oldest chronology dating back to 1897 (Table 1). Chronologies showed high expressed population signals (ranging from 0.85 to 0.91), while the variation explained by the first PC ranged from 29.12 to 49.02%. The chronologies were also similar in terms of their mean sensitivity varying from 0.24 to 0.31 (Table 1).

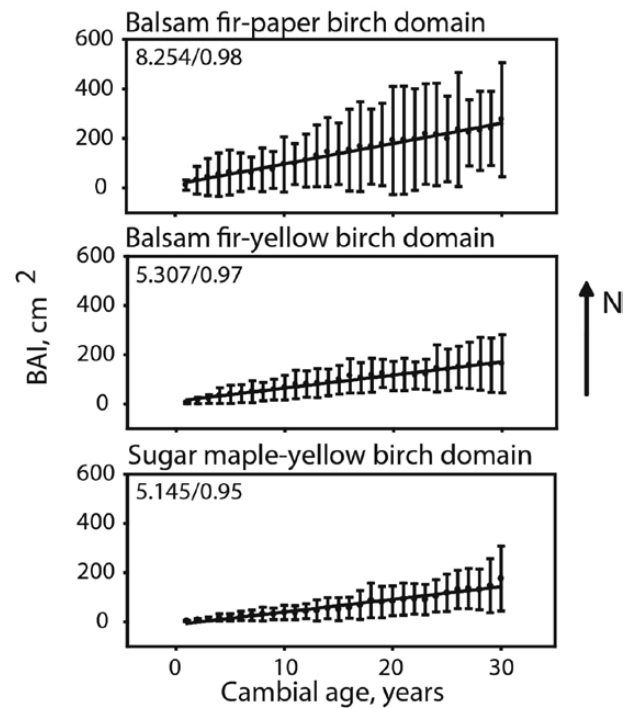
### Growth rates

Maple growth during the first 30 years of life was significantly higher ( $P < 0.001$ ) in the northernmost balsam fir-paper birch domain compared to the other two domains (Fig. 2). There was no difference between balsam fir-yellow birch and sugar maple-yellow birch domains in terms of the  $b$  coefficients representing the increase in growth rate with age during the first 30 years ( $P = 0.54$ ). In all three domains, linear regression fitted the growth patterns well, with  $R^2$  varying between 0.95 and 0.98.

Site average BAI accumulated during 2000–09 was significantly and positively related to site latitude ( $P = 0.032$ ), while competitive interactions and soil pH did not show significant effects on BAI (Table 2). The average growth rate over the whole tree lifespan was higher in the northern part of transect than in its south (Fig. 3). Trees on the northern sites ROQ exhibited the highest growth rate of 2.97 mm/year (Fig. 3).

### Climate–growth relationships

Temperature, precipitation and soil moisture conditions affected red maple growth (Fig. 4). Temperature in September



**Figure 2:** cambial age BAI chronologies of red maple in the three bioclimatic domains at its northern distribution limit, computed for the first 30 years of tree lifespan. Vertical bars represent standard deviations for a given cambial age. Data are fitted by linear regression with values of slope coefficient  $b$  and  $r^2$  given for each domain.

of the previous year was positively related to maple growth across the whole transect, with significant correlations observed at four sites (ROQ, SAB3, MAR and BEA). In the northern part of the transect, three out of six sites (ROQ, SAB1 and SAB2) showed significant positive correlations between summer (July) temperatures of the current year and growth, and the growth at all the six northern sites (DUP, ROQ, SAB1, SAB2, SAB3 and KEK) was significantly and positively correlated with precipitation in December of the previous year. In the southern part of transect, summer water deficit appeared to limit the growth, as indicated by significant and negative correlations with July MDC (sites REM and BEA), June temperature (BEA) and August temperature (REM), and by positive correlations with July precipitation (REM and BEA).

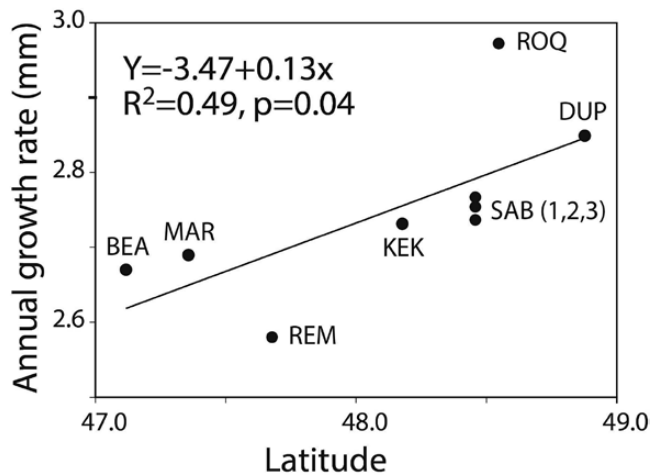
## DISCUSSION

Growth rate of red maple at its northern distributional limit increased with latitude, which rejected hypothesis 1 and suggested that decreasing temperatures do not limit biomass accumulation in maple. Initial (first 30 years of tree lifespan) and the most recent (2000–09) BAI, as well as growth rates averaged over the whole lifespan of the trees were all higher in the northern part of transect, suggesting that stand history was likely to be more important than direct climate variability in controlling biomass accumulation rates. However, annual

**Table 2:** multiple linear regression between cumulative BAI over 2000–09 and site factors

Factor	Estimated coefficient, <i>b</i>	95% confidence interval	Standard error	<i>t</i> value	<i>P</i> value
Intercept	-149.50	-354.30 to -79.40	52.49	-2.85	0.04
Latitude	3.21	1.93 to 22.56	1.09	2.96	0.03
Competition	-2.29	-11.50 to 7.82	2.09	-1.10	0.32
Soil pH	0.63	-3.29 to 7.28	1.48	0.43	0.69

95% confidence intervals were obtained by bootstrapping of original dataset 1000 times and calculating distribution of the *b* coefficients. For the whole model, the  $R^2$  is 0.47 with the 95% confidence interval being 0.29–0.56, and *P* is 0.11 (0.05–0.15).

**Figure 3:** mean diameter growth rate of whole lifespan along the latitude and linear regression between them.

growth variability was sensitive to temperature in the north of transect and to moisture availability in the south, supporting the idea of increased temperature sensitivity of growth toward the north (hypothesis 2). Below we discuss the details of these findings and the potential effects of future climate conditions on the northern distributional limit of red maple.

### Growth rates along the latitudinal gradient

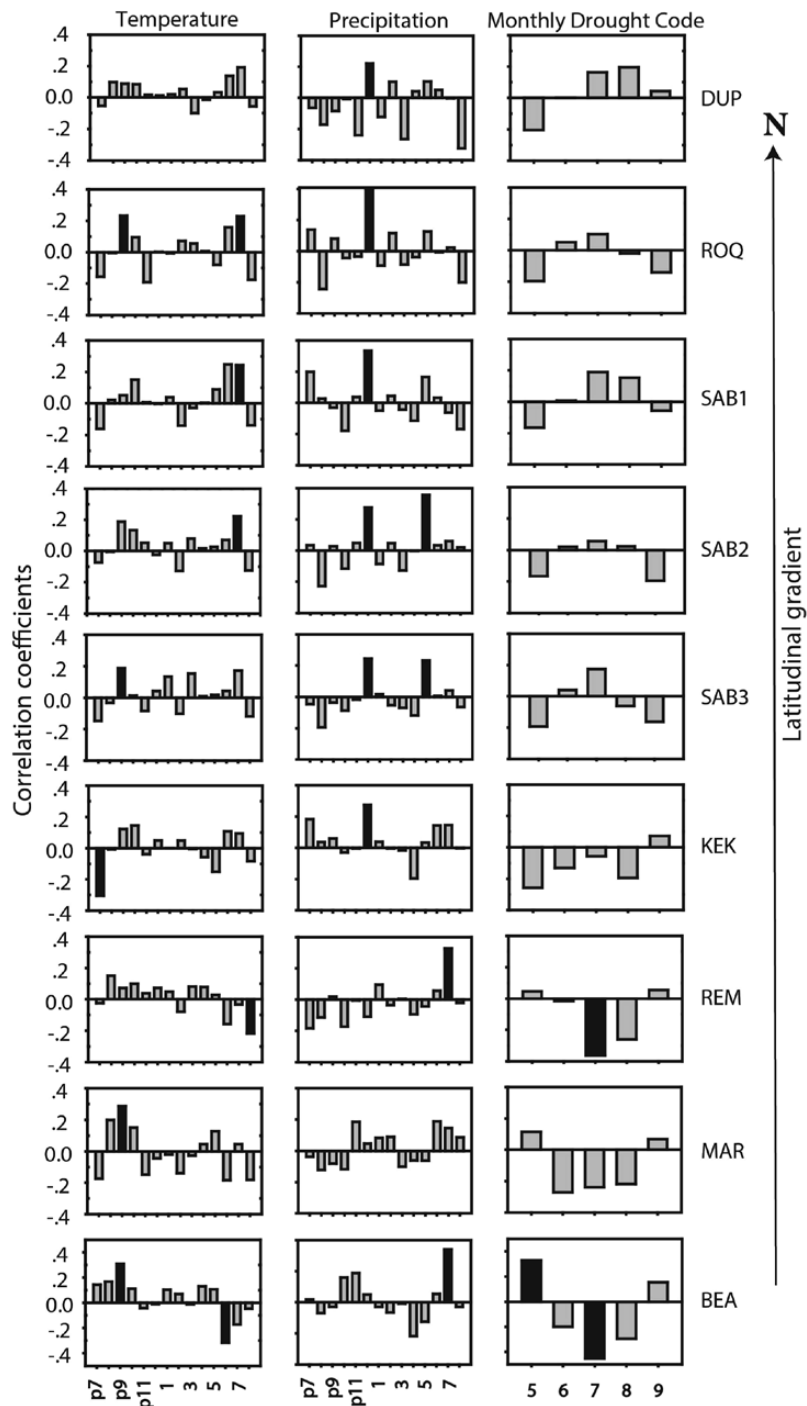
All growth variables analyzed in this study suggested that growth of red maple increased toward the north (Table 2; Figs 2 and 3), which falsified our assumption about temperature-driven decline in growth rate with increasing latitude. We believe that differences in stand history (Table 1) may be important in explaining the observed pattern. The sites in the northern balsam fir-paper birch domain regenerated after stand-replacing fires or clear cutting. Maple establishment likely followed such stand-replacing disturbance events, benefiting from high light levels during the early stages of stand development. It is worth mentioning in this context that red maple is one of the most fast growing trees in the northern mixedwood on till soils (Walters and Yawney 1990). In contrast, red maple trees in the more southerly locations (i.e. in sugar maple-yellow birch and balsam fir-yellow birch domains) likely regenerated under the closed canopy and eventually took advantage of canopy gap formation. Overall, this regeneration pathway resulted in both lower light levels and lower growth.

Empirical studies examining northern distributional limit of tree species in Canada have suggested that stand histories (disturbance regimes) may be the main factor controlling species distribution. Low fire frequency and small fire area were suggested to be limiting factor for the northern expansion of Jack pine (*Pinus banksiana* Lamb., Asselin et al. 2003). The northern distribution limits of red pine (*P. resinosa* Ait.), white oak (*Quercus alba* L.) and yellow birch (*Betula alleghaniensis* Britton) were related to a change in disturbance regime characterized by mixed severity and generally small fires to severe and large fires along south–north gradient (Drobyshev et al. 2014; Flannigan and Bergeron 1998; Sutton et al. 2002; Tardif et al. 2006).

Local forest management might further modulate maple growth response to climate. An exceptionally high growth rate observed at ROQ (Fig. 3) could be attributed to selective thinning, which was applied to this stand in connection to maple syrup production in the past. A lower stand density leading to decreased competition among trees, appeared therefore to override the effects of suboptimal climate on maple growth. Red maple has been shown to have strong and positive growth responses to decreases in stand density (Walters and Yawney 1990).

### Climate–growth relationships

Red maple growth was generally positively affected by summer temperature in the northern part of transect (sites ROQ, SAB1 and SAB2) and negatively affected by summer moisture in its southern part (sites REM and BEA, Fig. 4). Higher temperature likely enhanced photosynthetic rates during the short growing period at the northern sites, thereby favoring tree growth. A southward increase in temperature was accompanied by a decrease in precipitation (Table 1), which likely resulted in a higher water deficit in the south. A recent study conducted in an area of Northern Ontario (De Silva et al. 2012) adjacent to our southernmost sites, likewise demonstrated a negative effect of water deficiency on red maple growth. Negative effects of drought stress on red maple growth, shown for the mixed forests of the eastern USA (He et al. 2005), might have caused growth declines in red maple over that region (Fekedulegn et al. 2003). Negative effects of summer water deficiency on hardwood species have also been observed in sugar maple, which is taxonomically and ecologically related to red maple (Tardif et al. 2001), as well as



**Figure 4:** correlation coefficients of response function analyses for red maple from previous year July to current year August for the period 1965–2009 at its northern limit. A black bar indicates a significant relationship at  $P = 0.05$ .

in other deciduous species of eastern Canada, i.e. trembling aspen (*Populus tremuloides* Michx.), paper birch (Huang *et al.* 2010) and white oak (*Quercus alba* L.; Tardif *et al.* 2006).

Red maple growth in the northern part of transect was positively correlated with precipitation in December of the previous year (Fig. 4). We speculate that deeper snow cover during December would better protect roots from the

damaging effects of low temperature. Such relationship has been proposed in many studies of tree growth dynamics at distributional limits. Deep snow cover has been suggested as a factor limiting temperature-related root damage at tree lines both in northern Quebec (Payette *et al.* 1996) and in western Austria (Oberhuber 2004). Positive effects of early winter snow accumulation on tree growth have been reported



for Erman's birch (*Betula ermanii* Charm.) at the upper altitudinal limit of subalpine forests in northeastern China and central Japan (Takahashi *et al.* 2005; Yu *et al.* 2007). Negative effects of a reduction in snow cover on growth of sugar maple through damaging roots have been observed in the northern hardwood forest of USA (Comerford *et al.* 2012).

Red maple responded positively to previous September temperature across the entire latitudinal gradient (Fig. 4). Two mechanisms would explain this relationship. First, warmer autumn may lead to a longer growing season for red maple and help increase carbohydrate reserves in roots to be used in the following growing season (Kozłowski and Pallardy 1997; Yu *et al.* 2007). It has been widely reported that root reserves accumulated during the previous year play an important role for early growth of deciduous trees in the following year (Cheng and Fuchigami 2002; Hart *et al.* 2012; Tromp 1983). Secondly, warm autumn could promote root growth by keeping soil warm (Oberhuber 2004), and increases in root biomass during previous year could facilitate early growth in the following year due to greater root mass allowing better nutrients absorption (Ettl and Peterson 1995).

### Future responses of red maple to climate at its northern distributional limit

Our results suggested that effects of future climate on red maple distribution may be realized primarily through climatically induced changes in the natural disturbance regimes rather than through direct effects of climate on tree growth. The data indicated a strong link between red maple growth rates and the stand histories. The observation apparently reflected plasticity of maple life strategy at its northern distributional limit and, more generally, its ability for recruitment under different disturbance regimes (Duchesne and Prévost 2013; Hart *et al.* 2012; Lorimer 1984). An important element of this strategy appears to be a rapid response to changes in light availability, as it has been shown in the study of red maple response to budworm outbreaks (Duchesne and Prévost 2013), formation of tree fall gaps (Hart *et al.* 2012; Leithead *et al.* 2010) and timber harvesting (Abrams 1998; Duchesne and Ouimet 2008).

A projected increase in the frequency and severity of spruce budworm outbreaks (Gray 2008) and windstorms (Ouranos 2010) in the study region may favor maple colonization of new habitats, particularly on well and moderately drained parts of landscape. Forest fire may affect northern distributional limit of red maple in different ways depending on variations of fire severity and frequency in future. Red maple can sprout vigorously after fire disturbances (Walters and Yawney 1990). In this study the maple growth rate was higher in stands where maple cohort regenerated immediately after stand-replacing disturbances, as compared to stands with gap-associated regeneration (Fig. 3). This observation suggested that forest fires may promote maple regeneration. However, high severity fires or those occurring at high frequency likely disfavor maple frontier populations. Thin bark of adult

maple trees makes them susceptible to fires of even moderate intensity (Abrams 1998; Frissell 1973; Walters and Yawney 1990), and severe fire may kill roots of maples limiting vegetative regeneration. Frequent fires may reduce the amount of seed resources and lead to low levels of sexual regeneration (Tremblay *et al.* 2002), reducing possibility of colonizing newly available sites across landscape. Severe and/or frequent fires can therefore cause limiting availability of seed sources for recolonization, ultimately leading to a recession of maple northern limit southward.

Considering direct effects of future climate on red maple in western Quebec, it is likely that general warming of the climate would benefit maple recruitment and growth. Climate models predict that temperature will rise by an additional 2.2–3.5°C by 2050 over the entire study area, with a greater increase in winter (3.0–4.4°C, Ouranos 2010). Models also predict little change in summer precipitation patterns, but a decrease in snow accumulation during the winter (Ouranos 2010). A large increase in the abundance of maple seedlings due to climate warming has been reported at its northern limit in northeastern Ontario (Pinto *et al.* 2008) and eastern Quebec (Duchesne and Ouimet 2008; Duchesne and Prévost 2013), two locations which were geographically close to our study area. These results imply that future warming may also enhance recruitment of red maple in western Quebec. Increasing temperatures have been expected to increase seedling abundance of other tree species at high latitudinal or altitudinal distribution limits (Camarero and Gutiérrez 2004; Gamache and Payette 2005).

In the northern part of the study area (balsam fir-paper birch domain), the warmer summer may promote radial growth of red maple. During growing period, frontier populations of red maple may also benefit from warmer soil temperatures (Houle *et al.* 2012) and, consequently, increased nitrogen availability (Butler *et al.* 2011), which may be an important factor on sites with increased thickness of soil organic layer. Maple in the southern part of the study area (sugar maple-yellow birch and balsam fir-yellow birch domains) may face more stressful summer conditions in the future. A decrease in summer water availability may have a negative influence in maple growth in the south.

To conclude, future abundance of red maple at the landscape scale in the western Quebec appears to be largely a product of disturbance-mediated effects on its recruitment and growth. Dynamics of future precipitation, which controls levels of fire activity, seems to be of immediate importance under generally warmer and longer growing seasons. We believe that better projections of future precipitation should enhance our ability to project future changes in northern distributional limit of red maple in eastern Canada.

## SUPPLEMENTARY MATERIAL

Supplementary material is available at *Journal of Plant Ecology* online.

## FUNDING

The study was conducted within the framework of the Nordic-Canadian network on forest growth research, which is supported by Nordic Council of Ministers (12262 to I.D.), and the Swedish-Canadian network on dynamics of the boreal biome, which is supported by the Swedish Foundation for International Cooperation in Research and Higher Education STINT (IB2013-5420 to I.D.). We thank the Quebec Ministry of Economic Development, Innovation, and Exports (MDEIE, PSR-SIIRI-495); China Scholarship Council (CSC, 2008110861) and Centre for Forest Research for their generous financial support.

## ACKNOWLEDGEMENTS

We gratefully acknowledge the field assistance of Xiaoming Wang. We also thank William F. J. Parsons (Centre for Forest research, Quebec, Canada) for language checking of the early version of the manuscript. Y.Z. thanks He Wang and Zhili Yan for their help with the preparation of the figures.

*Conflict of interest statement.* None declared.

## REFERENCES

- Abrams MD (1998) The red maple paradox. *BioScience* **48**:355–64.
- Allen CD, Macalady AK, Chenchouni H, *et al.* (2010) A global overview of drought and heat-induced tree mortality reveals emerging climate change risks for forests. *For Ecol Manage* **259**:660–84.
- Armas C, Kikvidze Z, Pugnaire FI (2009) Abiotic conditions, neighbour interactions, and the distribution of *Stipa tenacissima* in a semi-arid mountain range. *J Arid Environ* **73**:1084–9.
- Ashraf MI, Bourque CP-A, MacLean DA, *et al.* (2013) Estimation of potential impacts of climate change on growth and yield of temperate tree species. *Mitig Adapt Strat GL*. doi:10.1007/s11027-013-9484-9
- Asselin H, Payette S, Fortin M-J, *et al.* (2003) The northern limit of *Pinus banksiana* Lamb. in Canada: explaining the difference between the eastern and western distributions. *J Biogeogr* **30**:1709–18.
- Bergeron Y, Cyr D, Girardin MP, *et al.* (2010) Will climate change drive 21st century burn rates in Canadian boreal forest outside of its natural variability: collating global climate model experiments with sedimentary charcoal data. *Int J Wildland Fire* **19**:1127–39.
- Berteaux D, de Blois S, Angers J-F, *et al.* (2010) The CC-Bio Project: studying the effects of climate change on Quebec biodiversity. *Divers* **2**:1181–204.
- Biondi F, Waikul K (2004) DENDROCLIM2002: a C++ program for statistical calibration of climate signals in tree-ring chronologies. *Comput Geosci-UK* **30**:303–11.
- Boer GJ, Flato D, Ramsden D (2000) A transient climate change simulation with greenhouse gas and aerosol forcing: projected climate to the twenty-first century. *Clim Dynam* **16**:427–50.
- Bouchard M, Kneeshaw D, Bergeron Y (2005) Mortality and stand renewal patterns following the last spruce budworm outbreak in mixed forests of western Quebec. *For Ecol Manage* **204**:297–313.
- Briffa KR, Cook ER (1990) Methods of response function analysis. In Cook ER, Kairiukstis L (eds). *Methods of Dendrochronology. Applications in the Environmental Sciences*. Dordrecht, The Netherlands: Kluwer Academic Publishers, 240–8.
- Butler SM, Melillo JM, Johnson JE, *et al.* (2011) Soil warming alters nitrogen cycling in a New England forest: implications for ecosystem function and structure. *Oecologia* **168**:819–28.
- Camarero JJ, Gutiérrez E (2004) Pace and pattern of recent tree-line dynamics: response of ecotones to climatic variability in the Spanish Pyrenees. *Climatic Change* **63**:181–200.
- Carpenter FL, Nichols JD, Sandi E (2004) Early growth of native and exotic trees planted on degraded tropical pasture. *For Ecol Manage* **196**:367–78.
- Cheng L, Fuchigami L (2002) Growth of young apple trees in relation to reserve nitrogen and carbohydrates. *Tree Physiol* **22**:1297–303.
- Comerford DP, Schaberg PG, Templer PH, *et al.* (2012) Influence of experimental snow removal on root and canopy physiology of sugar maple trees in a northern hardwood forest. *Oecologia* **171**:261–9. doi:10.1007/s00442-012-2393-x
- Cook ER, Peters K (1981) The smoothing spline: a new approach to standardizing forest interior tree-ring width series for dendroclimatic studies. *Tree-Ring Bull* **41**:45–53.
- Davis AJ, Jenkinson LS, Lawton JH, *et al.* (1998) Making mistakes when predicting shifts in species range in response to global warming. *Nature* **391**:783–6.
- Davis MB (1981) Quaternary history and the stability of forest communities. In West DC, Shugart HH, Botkin DB (eds). *Forest Succession: Concepts and Application*. New York: Springer-Verlag, 132–53.
- Delcourt HR, Delcourt PA (1987) *Long-Term Forest Dynamics of the Temperate Zone*. New York: Springer-Verlag.
- De Silva ND, Cholewa E, Ryser P (2012) Effects of combined drought and heavy metal stresses on xylem structure and hydraulic conductivity in red maple (*Acer rubrum* L.). *J Exp Bot* **63**:5957–66.
- Drobyshev I, Guitard MA, Asselin H, *et al.* (2014) Environmental controls of the yellow birch distribution limit in eastern Canada. *Can J For Res* **44**:720–31.
- Drobyshev I, Gewehr S, Berninger F, *et al.* (2013) Species-specific growth responses of black spruce and trembling aspen may enhance resilience of boreal forest to climate change. *J Ecol* **101**:231–42.
- Drobyshev I, Simard M, Bergeron Y, *et al.* (2010) Does soil organic layer thickness affect climate–growth relationships in the black spruce boreal ecosystem? *Ecosystems* **13**:556–74.
- Duchesne L, Ouimet R (2008) Population dynamics of tree species in southern Quebec, Canada: 1970–2005. *For Ecol Manage* **255**:3001–12.
- Duchesne L, Prévost M (2013) Canopy disturbance and intertree competition: implications for tree growth and recruitment in two yellow birch-conifer stands in Quebec, Canada. *J Forest Res-JPN* **18**:168–78.
- Ettinger AK, HilleRisLambers J (2013) Climate isn't everything: competitive interactions and variation by life stage will also affect range shifts in a warming world. *Am J Bot* **100**:1–12.
- Ettl GJ, Peterson DL (1995) Growth response of subalpine fir (*Abies lasiocarpa*) to climate in the Olympic Mountains, Washington, USA. *Glob Change Biol* **1**:213–30.
- Fekedulegn D, Hicks RR, Colbert JJ (2003) Influence of topographic aspect, precipitation and drought on radial growth of four

- major tree species in an Appalachian watershed. *For Ecol Manage* **177**:409–25.
- Flannigan MD, Bergeron Y (1998) Possible role of disturbance in shaping the northern distribution of *Pinus resinosa*. *J Veg Sci* **9**:477–82.
- Fox J (2002) Bootstrapping regression models. In “*An R and S-PLUS Companion to Applied Regression: A Web Appendix to the Book.*” Thousand Oaks, CA: Sage. <http://CRAN.R-project.org/doc/contrib/Fox-Companion/appendix-bootstrapping.pdf>.
- Frank D, Esper J (2005) Characterization and climate response patterns of a high-elevation, multi-species tree-ring network in the European Alps. *Dendrochronologia* **22**:107–21.
- Frissell SS (1973) The importance of fire as a natural ecological factor in Itasca State Park, Minnesota. *Quaternary Res* **3**:397–407.
- Fritts HC (1976) *Tree Rings and Climate*. London: Academic Press.
- Gamache I, Payette S (2005) Latitudinal response of subarctic tree lines to recent climate change in eastern Canada. *J Biogeogr* **32**:849–62.
- Gavin DG, Hu F-S (2006) Spatial variation of climatic and non-climatic controls on species distribution: the range limit of *Tsuga heterophylla*. *J Biogeogr* **33**:1384–96.
- Genries A, Drobyshev I, Bergeron Y (2012) Growth-climate response of jack pine on clay soils in northeastern Canada. *Dendrochronologia* **30**:127–36.
- Girardin MP, Wotton BM (2009) Summer moisture and wildfire risks across Canada. *J App Meteorol and Clim* **48**:517–33.
- Goldblum D, Rigg LS (2005) Tree growth response to climate change at the deciduous/boreal forest ecotone, Ontario, Canada. *Can J Forest Res* **35**:2709–18.
- Graignic N, Tremblay F, Bergeron Y (2014) Geographical variation in reproductive capacity of sugar maple (*Acer saccharum* Marshall) northern peripheral populations. *J Biogeogr* **41**:145–57.
- Gray DR (2008) The relationship between climate and outbreak characteristics of the spruce budworm in eastern Canada. *Climatic Change* **87**:361–83.
- Griesbauer HP, Green DS (2010) Assessing the climatic sensitivity of Douglas-fir at its northern range margins in British Columbia, Canada. *Trees-Struct Funct* **24**:375–89.
- Guo H, Zhang Y, Lan Z, et al. (2013) Biotic interactions mediate the expansion of black mangrove (*Avicennia germinans*) into salt marshes under climate change. *Glob Change Biol* **19**:2765–74.
- Hansen AJ, Neilson RR, Dale VH, et al. (2001) Global change in forests: responses of species, communities, and biomes. *BioScience* **51**:765–79.
- Hart JL, Buchanan ML, Clark SL, et al. (2012) Canopy accession strategies and climate-growth relationships in *Acer rubrum*. *For Ecol Manage* **282**:124–32.
- He J-S, Zhang Q-B, Bazzaz FA (2005) Differential drought responses between saplings and adult trees in four co-occurring species of New England. *Trees-Struct Funct* **19**:442–50.
- Hegy F (1974) A simulation model for managing jack-pine stands. In Fries J (ed). *Proceedings, Growth Models for Tree and Stand Simulation, IUFRO S4.01–4*. Stockholm, Sweden: Department of Forest Yield, Royal College of Forestry, 74–87.
- Holmes RL (1983) Computer-assisted quality control in tree-ring dating and measurement. *Tree-Ring Bull* **43**:69–78.
- Houle D, Bouffard A, Duchesne L, et al. (2012) Projections of future soil temperature and water content for three southern Quebec forested sites. *J Climate* **25**:7690–701.
- Huang J-G, Tardif JC, Bergeron Y, et al. (2010) Radial growth response of four dominant boreal tree species to climate along a latitudinal gradient in the eastern Canadian boreal forest. *Glob Change Biol* **16**:711–31.
- James GI, Courtin GM (1985) Stand structure and growth form of the birch transition community in an industrially damaged ecosystem, Sudbury, Ontario. *Can J Forest Res* **15**:809–17.
- Kozłowski TT, Pallardy SG (1997) *Growth Control in Woody Plants*. San Diego, CA: Academic Press, 697.
- Kullman L (1993) Pine (*Pinus sylvestris* L.) tree-limit surveillance during recent decades, Central Sweden. *Arct Alp Res* **25**:24–31.
- Laganière J, Paré D, Bradley RL (2010) How does a tree species influence litter decomposition? Separating the relative contribution of litter quality, litter mixing, and forest floor conditions. *Can J Forest Res* **40**:465–75.
- Lalonde D (1991) Distribution et dynamique des communautés d’Érable rouge à la limite nord de leur répartition en Abitibi, Québec. *M.Sc. Thesis*. Montréal, QC, Canada: Université du Québec à Montréal.
- Larsson L-A (2010) *CDendro v. 7.3. Cybis Elektronik & Data AB*. Sweden: Saltsjöbaden.
- Leithhead MD, Anand M, Silva LC (2010) Northward migrating trees establish in treefall gaps at the northern limit of the temperate-boreal ecotone, Ontario, Canada. *Oecologia* **164**:1095–106.
- Little EL (1971) *Atlas of United States Trees, Vol. 1, Conifers and Important Hardwoods*. U.S. Department of Agriculture Miscellaneous Publication 1146, 9 p., 200 maps.
- Lorimer CG (1984) Development of the red maple understory in northeastern oak forests. *Forest Sci* **30**:3–22.
- Lv L-X, Zhang Q-B (2012) Asynchronous recruitment history of *Abies spectabilis* along an altitudinal gradient in the Mt. Everest region. *J Plant Ecol* **5**:147–56.
- MacDonald GM (1993) Fossil pollen analysis and the reconstruction of plant invasions. *Adv Ecol Res* **24**:67–110.
- Mäkinen H, Nöjd P, Kahle H-P, et al. (2002). Radial growth variation of Norway spruce (*Picea abies* (L.) Karst.) across latitudinal and altitudinal gradients in central and northern Europe. *For Ecol Manage* **171**:243–59.
- McKenney DW, Pedlar JH, Lawrence K, et al. (2007) Potential impacts of climate change on the distribution of North American trees. *BioScience* **57**:939–48.
- Ministère des Ressources naturelles du Québec (MRNQ) (1998) *Rapport de classification écologique: sapinière à bouleau jaune de l’ouest. Programme de connaissance des écosystèmes forestiers du Québec méridional*. Québec, QC, Canada: Gouvernement du Québec.
- Morzukh BJ, Ruark GA (1991) Principal components regression to mitigate the effects of multicollinearity. *Forest Sci* **37**:191–9.
- Nishimura PH, Laroque CP (2011) Observed continentality in radial growth-climate relationships in a twelve site network in western Labrador, Canada. *Dendrochronologia* **29**:17–23.
- Oberhuber W (2004) Influence of climate on radial growth of *Pinus cembra* within the alpine timberline ecotone. *Tree Physiol* **24**:291–301.
- Ouranos (2010) *Savoir s’adapter aux changements climatiques [Learning to Adapt to Climate Change]*. In DesJarlais C, Allard M, Blondlot A, et al. (eds). *Ouranos (Consortium on Regional Climatology and Adaptation to Climate Change)*. Montréal.



- Payette S, Delwaide A, Morneau C, *et al.* (1996) Patterns of tree stem decline along a snow-drift gradient at treeline: a case study using stem analysis. *Can J Bot* **74**:1671–83.
- Pedersen BS (1998) The role of stress in the mortality of midwestern oaks as indicated by growth prior to death. *Ecology* **79**:79–93.
- Pederson N, Cook ER, Jacoby GC, *et al.* (2004) The influence of winter temperatures on the annual radial growth of six northern range margin tree species. *Dendrochronologia* **22**:7–29.
- Pinto F, Romaniuk S, Ferguson M (2008) Changes to preindustrial forest tree composition in central and northeastern Ontario, Canada. *Can J Forest Res* **38**:1842–54.
- Plummer DA, Caya D, Frigon A, *et al.* (2006) Climate and climate change over North America as simulated by the Canadian RCM. *J Climate* **19**:3112–32.
- Régnière J (1996) Generalized approach to landscape-wide seasonal forecasting with temperature-driven simulation models. *Environ Entomol* **25**:869–81.
- Richardson AD, Bailey AS, Denny EG, *et al.* (2006) Phenology of a northern hardwood forest canopy. *Glob Change Biol* **12**:1174–88.
- Saucier J-P, Grondin P, Robitaille A, *et al.* (2003) *Zones de végétation et domaines bioclimatiques du Québec*. Québec, QC, Canada: Ministère des Ressources naturelles, de la Faune et des Parcs, Gouvernement du Québec.
- Scheller RM, Mladenoff DJ (2008) Simulated effects of climate change, fragmentation, and inter-specific competition on tree species migration in northern Wisconsin, USA. *Clim Res* **36**:191–202.
- Sheldrick BH, Wang C (1993) Particle size distribution. In Carter MR (ed). *Soil Sampling and Methods of Analysis*. Boca Raton, FL: Canadian Society of Soil Science, Lewis Publishers, 499–511.
- Stokes MA, Smiley TL (1968) *An Introduction to Tree-Ring Dating*. Chicago, IL: University of Chicago Press.
- Suarez F, Binkley D, Kaye MW, *et al.* (1999) Expansion of forest stands into tundra in the Noatak National Preserve, northwest Alaska. *Ecoscience* **6**:465–70.
- Sutton A, Staniforth R, Tardif J (2002) Reproductive ecology and allometry of red pine (*Pinus resinosa* Ait.) at the northwestern limit of its distribution range, Manitoba, Canada. *Can J Bot* **80**:482–93.
- Takahashi, K, Tokumitsu Y, Yasue K (2005) Climatic factors affecting the tree-ring width of *Betula ermanii* at the timberline on Mount Norikura, central Japan. *Ecol Res* **20**:445–51.
- Tardif J, Bergeron Y (1993) Radial growth of *Fraxinus nigra* in a Canadian boreal floodplain in response to climatic and hydro-logic fluctuations. *J Veg Sci* **4**:751–8.
- Tardif J, Brisson J, Bergeron Y (2001) Dendroclimatic analysis of *Acer saccharum*, *Fagus grandifolia*, and *Tsuga canadensis* from an old-growth forest, southwestern Quebec. *Can J Forest Res* **31**:1491–501.
- Tardif JC, Conciatori F, Nantel P, *et al.* (2006) Radial growth and climate responses of white oak (*Quercus alba*) and northern red oak (*Quercus rubra*) at the northern distribution limit of white oak in Quebec, Canada. *J Biogeogr* **33**:1657–69.
- Terrier A, Girardin MP, Périé C, *et al.* (2013) Potential changes in forest composition could reduce impacts of climate change on boreal wildfires. *Ecol Appl* **23**:21–35.
- Tremblay MF, Bergeron Y, Lalonde D, *et al.* (2002) The potential effects of sexual reproduction and seedling recruitment on the maintenance of red maple (*Acer rubrum* L.) populations at the northern limit of the species range. *J Biogeogr* **29**:365–73.
- Tromp J (1983) Nutrient reserves in roots of fruit trees, in particular carbohydrates and nitrogen. *Plant Soil* **71**:401–13.
- Turner JA (1972) *The Drought Code Component of the Canadian Forest Fire Behaviour System*. Ottawa, ON: Department of the Environment, Canadian Forestry Service, Publication No. 1316.
- Tylianakis JM, Didham RK, Bascompte J, *et al.* (2008) Global change and species interactions in terrestrial ecosystems. *Ecol Lett* **11**:1351–63.
- Vincent J-S, Hardy L (1977) L'évolution et l'extension des lacs glaciaires Barlow et Ojibway en territoire québécois. *Géographie physique et Quaternaire* **31**:357–72.
- Walters RS, Yawney HW (1990) *Acer rubrum* red maple. In Burns RM, Honkala BH (technical coordinators). *Silvics of North America*, Vol. 2. Hardwoods. Agricultural Handbook 654. Washington, DC: USDA Forest Service, 60–9.
- Way DA, Oren R (2010) Differential responses to changes in growth temperature between trees from different functional groups and biomes: a review and synthesis of data. *Tree Physiol* **30**:669–88.
- Wilmking M, Juday GP, Barber VA, *et al.* (2004) Recent climate warming forces contrasting growth responses of white spruce at tree-line in Alaska through temperature thresholds. *Glob Change Biol* **10**:1724–36.
- Yu D-P, Wang G-G, Dai L-M, *et al.* (2007) Dendroclimatic analysis of *Betula ermanii* forests at their upper limit of distribution in Changbai Mountain, Northeast China. *For Ecol Manage* **240**:105–13.
- Zhang X, Vincent L, Hogg WD, *et al.* (2000) Temperature and precipitation trends in Canada during the 20th century. *Atmos Ocean* **38**:395–429.
- Zhang Q-B, Hebda R (2004) Radial growth patterns of Douglas-fir along an elevational gradient in central coast British Columbia, Canada. *Can J Forest Res* **34**:1946–54.